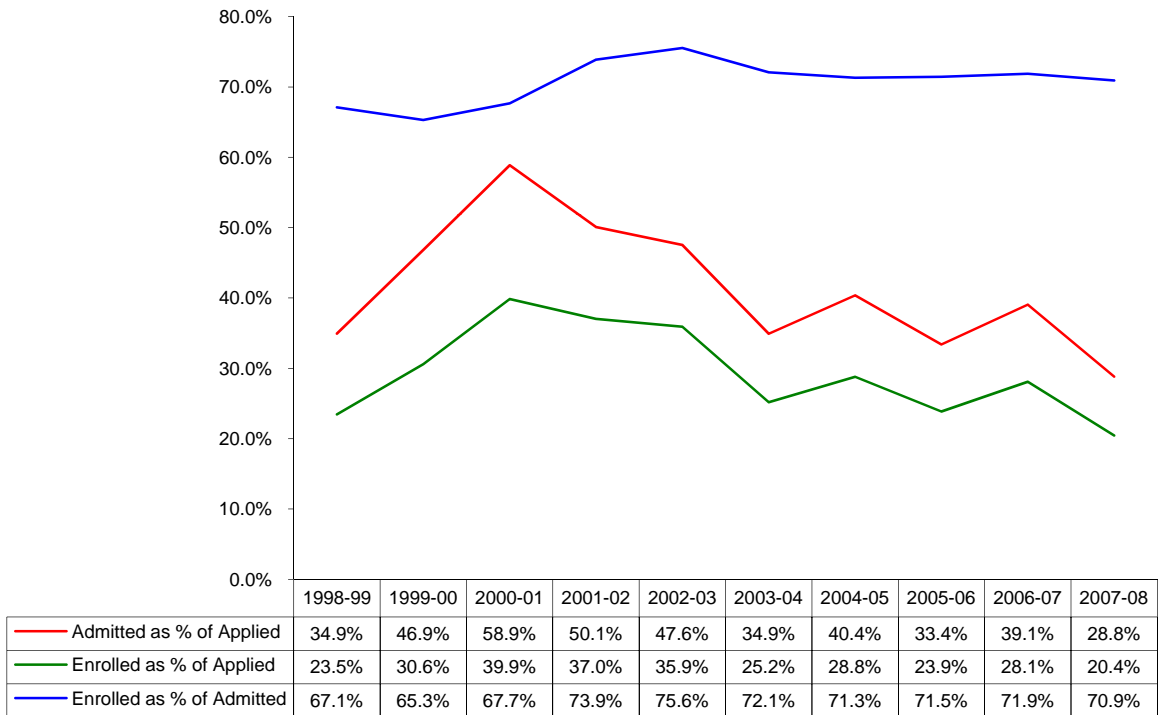
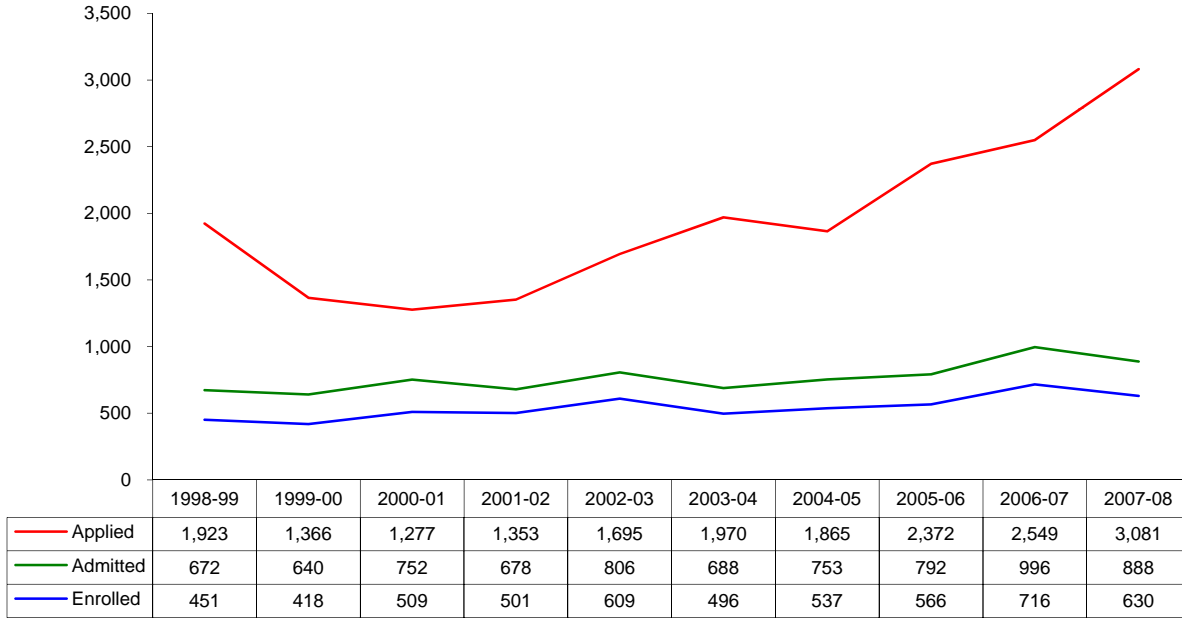




Applied, Admitted, and Enrolled By Academic Year

**Graduate School of Biomedical Sciences,
School of Allied Health Sciences, and School of Nursing
All Applicants and Students**

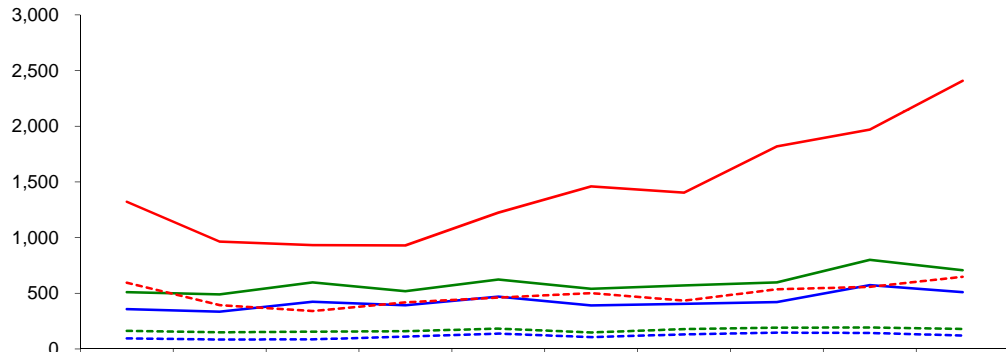


Excludes School of Medicine

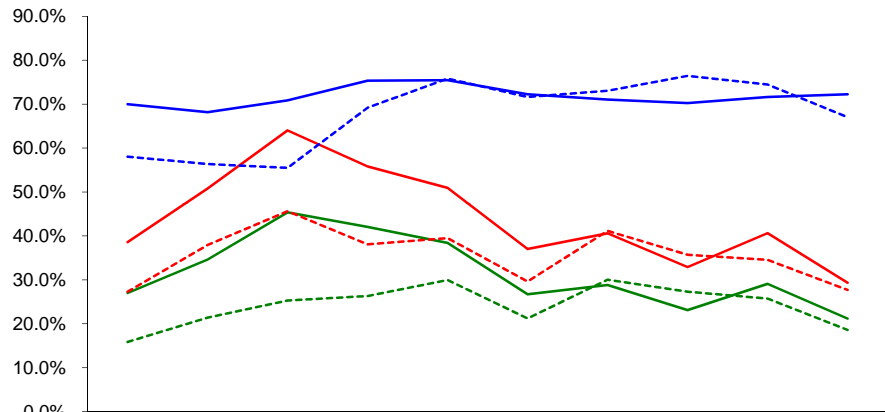


Applied, Admitted, and Enrolled By Academic Year

Graduate School of Biomedical Sciences, School of Allied Health Sciences, and School of Nursing Gender



	1998-99	1999-00	2000-01	2001-02	2002-03	2003-04	2004-05	2005-06	2006-07	2007-08
Applied - Female	1,322	965	933	930	1,224	1,460	1,405	1,819	1,970	2,409
Admitted - Female	510	490	597	519	623	540	570	598	800	706
Enrolled - Female	357	334	423	391	470	390	405	420	573	510
Applied - Male	594	393	340	418	461	500	433	535	556	647
Admitted - Male	162	149	155	159	182	148	178	191	192	179
Enrolled - Male	94	84	86	110	138	106	130	146	143	120



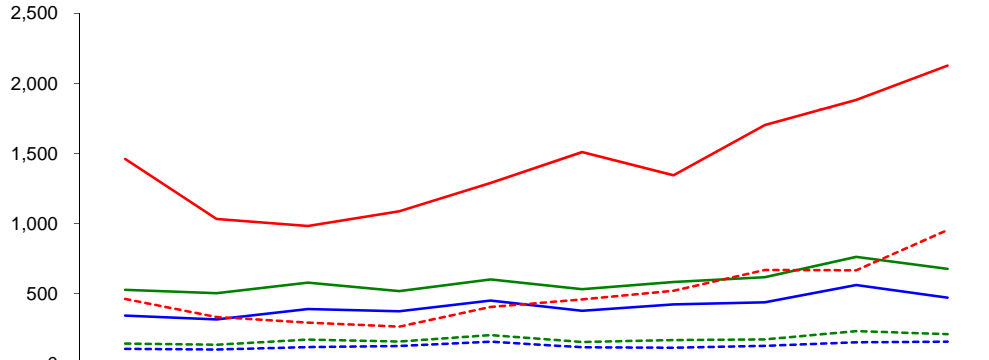
	1998-99	1999-00	2000-01	2001-02	2002-03	2003-04	2004-05	2005-06	2006-07	2007-08
Admitted as % of Applied - Female	38.6%	50.8%	64.0%	55.8%	50.9%	37.0%	40.6%	32.9%	40.6%	29.3%
Enrolled as % of Applied - Female	27.0%	34.6%	45.3%	42.0%	38.4%	26.7%	28.8%	23.1%	29.1%	21.2%
Enrolled as % of Admitted - Female	70.0%	68.2%	70.9%	75.3%	75.4%	72.2%	71.1%	70.2%	71.6%	72.2%
Admitted as % of Applied - Male	27.3%	37.9%	45.6%	38.0%	39.5%	29.6%	41.1%	35.7%	34.5%	27.7%
Enrolled as % of Applied - Male	15.8%	21.4%	25.3%	26.3%	29.9%	21.2%	30.0%	27.3%	25.7%	18.5%
Enrolled as % of Admitted - Male	58.0%	56.4%	55.5%	69.2%	75.8%	71.6%	73.0%	76.4%	74.5%	67.0%

Excludes School of Medicine; Excludes students not reporting gender on the application

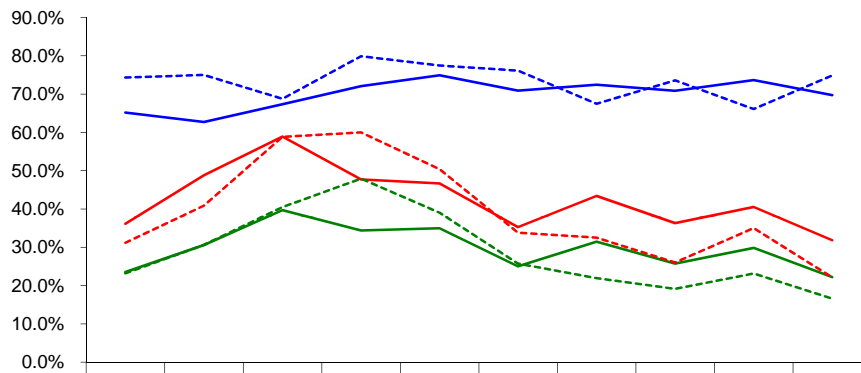


Applied, Admitted, and Enrolled By Academic Year

Graduate School of Biomedical Sciences, School of Allied Health Sciences, and School of Nursing Under Represented Minority (URM) Status



	1998-99	1999-00	2000-01	2001-02	2002-03	2003-04	2004-05	2005-06	2006-07	2007-08
Applied - Not URM	1,461	1,033	983	1,088	1,290	1,511	1,345	1,703	1,883	2,127
Admitted - Not URM	528	504	579	519	602	533	584	618	763	677
Enrolled - Not URM	344	316	390	374	451	378	423	438	562	472
Applied - URM	462	333	294	265	405	459	520	669	666	954
Admitted - URM	144	136	173	159	204	155	169	174	233	211
Enrolled - URM	107	102	119	127	158	118	114	128	154	158



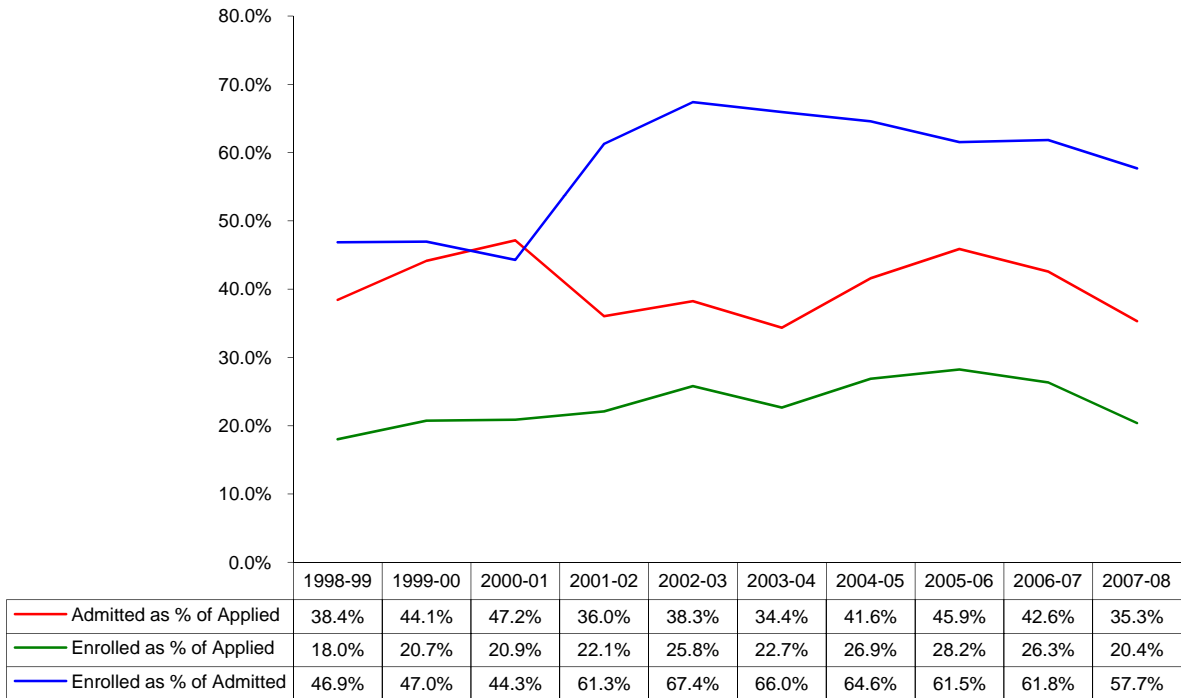
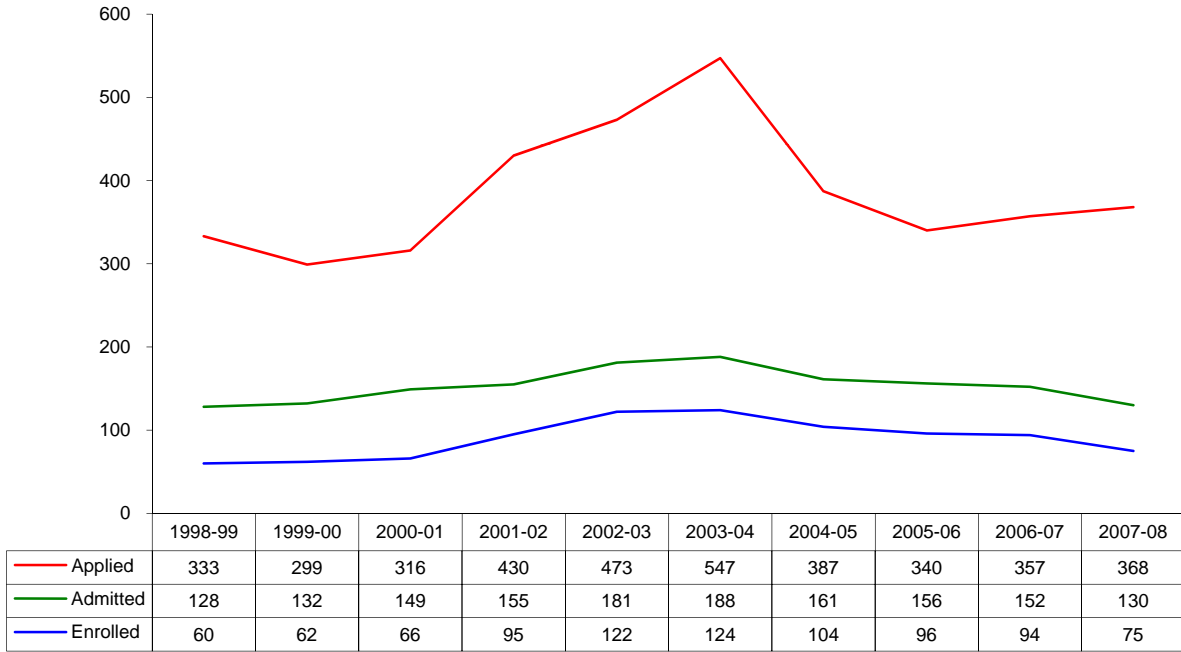
	1998-99	1999-00	2000-01	2001-02	2002-03	2003-04	2004-05	2005-06	2006-07	2007-08
Admitted as % of Applied - Not URM	36.1%	48.8%	58.9%	47.7%	46.7%	35.3%	43.4%	36.3%	40.5%	31.8%
Enrolled as % of Applied - Not URM	23.5%	30.6%	39.7%	34.4%	35.0%	25.0%	31.4%	25.7%	29.8%	22.2%
Enrolled as % of Admitted - Not URM	65.2%	62.7%	67.4%	72.1%	74.9%	70.9%	72.4%	70.9%	73.7%	69.7%
Admitted as % of Applied - URM	31.2%	40.8%	58.8%	60.0%	50.4%	33.8%	32.5%	26.0%	35.0%	22.1%
Enrolled as % of Applied - URM	23.2%	30.6%	40.5%	47.9%	39.0%	25.7%	21.9%	19.1%	23.1%	16.6%
Enrolled as % of Admitted - URM	74.3%	75.0%	68.8%	79.9%	77.5%	76.1%	67.5%	73.6%	66.1%	74.9%

Excludes School of Medicine; Students not reporting ethnicity on application included in "Not URM"
Under represented minority includes only American Indian / Alaskan Native, Black, and Hispanic



Applied, Admitted, and Enrolled By Academic Year

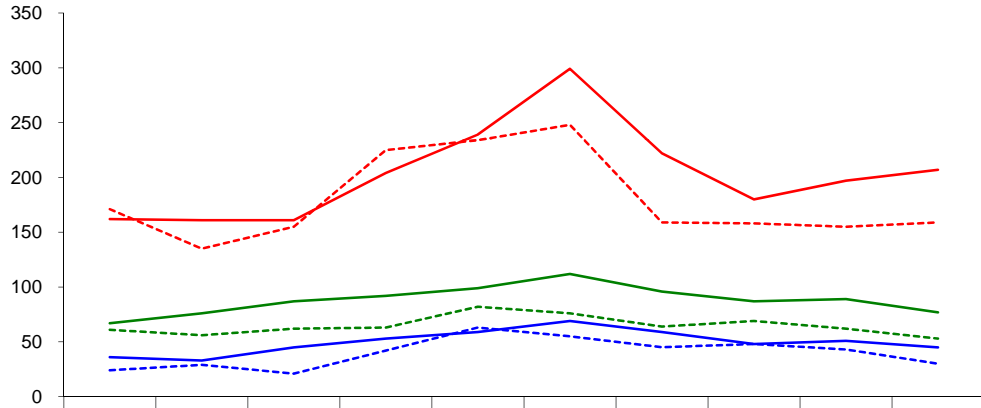
Graduate School of Biomedical Sciences All Applicants and Students



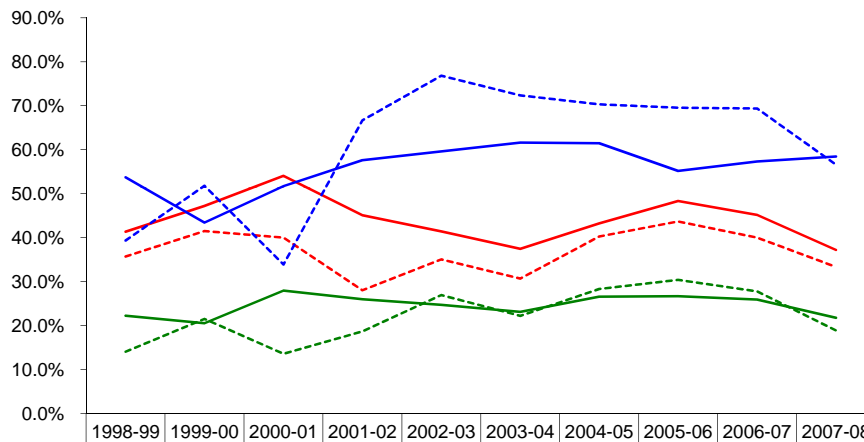


Applied, Admitted, and Enrolled By Academic Year

Graduate School of Biomedical Sciences Gender



	1998-99	1999-00	2000-01	2001-02	2002-03	2003-04	2004-05	2005-06	2006-07	2007-08
Applied - Female	162	161	161	204	239	299	222	180	197	207
Admitted - Female	67	76	87	92	99	112	96	87	89	77
Enrolled - Female	36	33	45	53	59	69	59	48	51	45
Applied - Male	171	135	155	225	234	248	159	158	155	159
Admitted - Male	61	56	62	63	82	76	64	69	62	53
Enrolled - Male	24	29	21	42	63	55	45	48	43	30



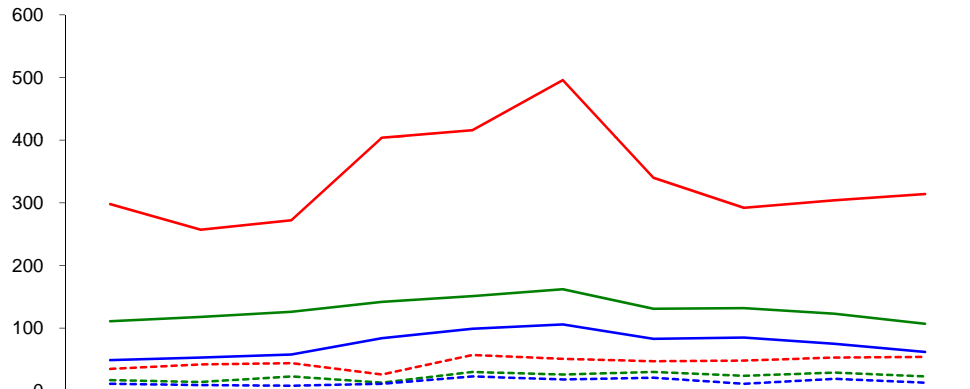
	1998-99	1999-00	2000-01	2001-02	2002-03	2003-04	2004-05	2005-06	2006-07	2007-08
Admitted as % of Applied - Female	41.4%	47.2%	54.0%	45.1%	41.4%	37.5%	43.2%	48.3%	45.2%	37.2%
Enrolled as % of Applied - Female	22.2%	20.5%	28.0%	26.0%	24.7%	23.1%	26.6%	26.7%	25.9%	21.7%
Enrolled as % of Admitted - Female	53.7%	43.4%	51.7%	57.6%	59.6%	61.6%	61.5%	55.2%	57.3%	58.4%
Admitted as % of Applied - Male	35.7%	41.5%	40.0%	28.0%	35.0%	30.6%	40.3%	43.7%	40.0%	33.3%
Enrolled as % of Applied - Male	14.0%	21.5%	13.5%	18.7%	26.9%	22.2%	28.3%	30.4%	27.7%	18.9%
Enrolled as % of Admitted - Male	39.3%	51.8%	33.9%	66.7%	76.8%	72.4%	70.3%	69.6%	69.4%	56.6%

Excludes students not reporting gender on the application

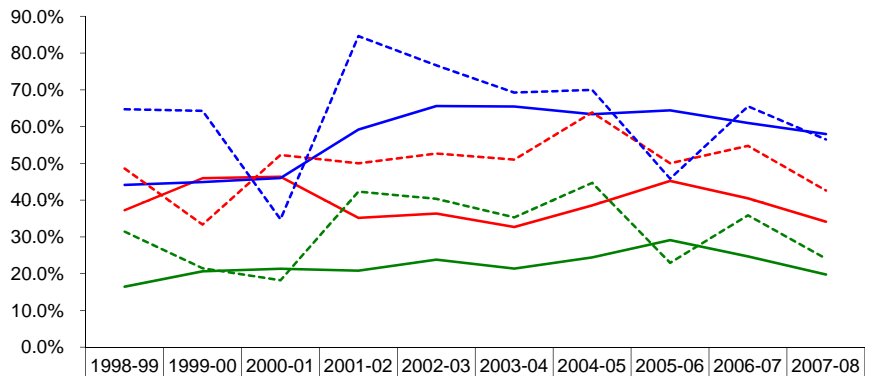


Applied, Admitted, and Enrolled By Academic Year

Graduate School of Biomedical Sciences Under Represented Minority (URM) Status



	1998-99	1999-00	2000-01	2001-02	2002-03	2003-04	2004-05	2005-06	2006-07	2007-08
Applied - Not URM	298	257	272	404	416	496	340	292	304	314
Admitted - Not URM	111	118	126	142	151	162	131	132	123	107
Enrolled - Not URM	49	53	58	84	99	106	83	85	75	62
Applied - URM	35	42	44	26	57	51	47	48	53	54
Admitted - URM	17	14	23	13	30	26	30	24	29	23
Enrolled - URM	11	9	8	11	23	18	21	11	19	13



	1998-99	1999-00	2000-01	2001-02	2002-03	2003-04	2004-05	2005-06	2006-07	2007-08
Admitted as % of Applied - Not URM	37.2%	45.9%	46.3%	35.1%	36.3%	32.7%	38.5%	45.2%	40.5%	34.1%
Enrolled as % of Applied - Not URM	16.4%	20.6%	21.3%	20.8%	23.8%	21.4%	24.4%	29.1%	24.7%	19.7%
Enrolled as % of Admitted - Not URM	44.1%	44.9%	46.0%	59.2%	65.6%	65.4%	63.4%	64.4%	61.0%	57.9%
Admitted as % of Applied - URM	48.6%	33.3%	52.3%	50.0%	52.6%	51.0%	63.8%	50.0%	54.7%	42.6%
Enrolled as % of Applied - URM	31.4%	21.4%	18.2%	42.3%	40.4%	35.3%	44.7%	22.9%	35.8%	24.1%
Enrolled as % of Admitted - URM	64.7%	64.3%	34.8%	84.6%	76.7%	69.2%	70.0%	45.8%	65.5%	56.5%

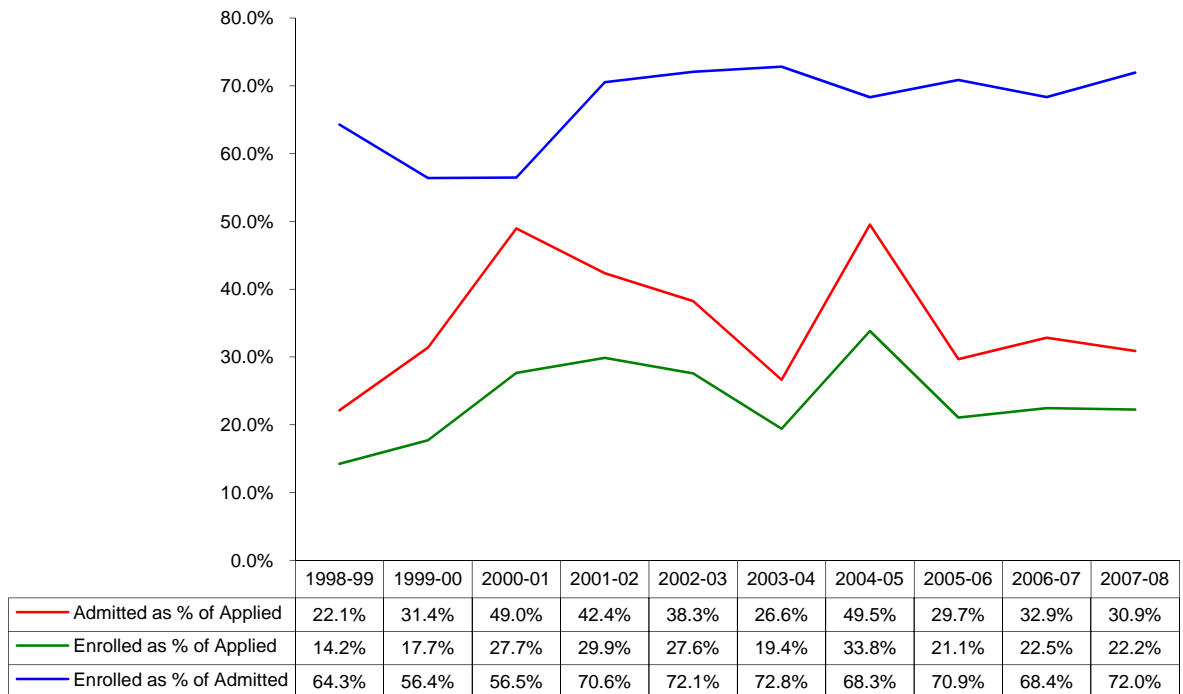
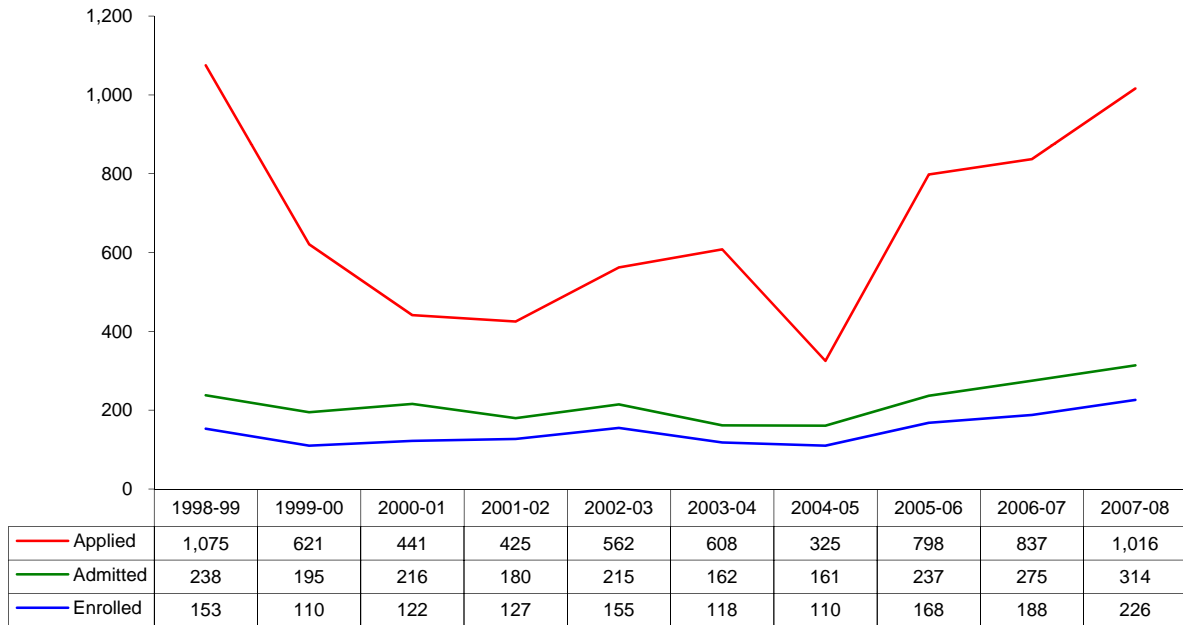
Students not reporting ethnicity on application included in "Not URM"

Under represented minority includes only American Indian / Alaskan Native, Black, and Hispanic



Applied, Admitted, and Enrolled By Academic Year

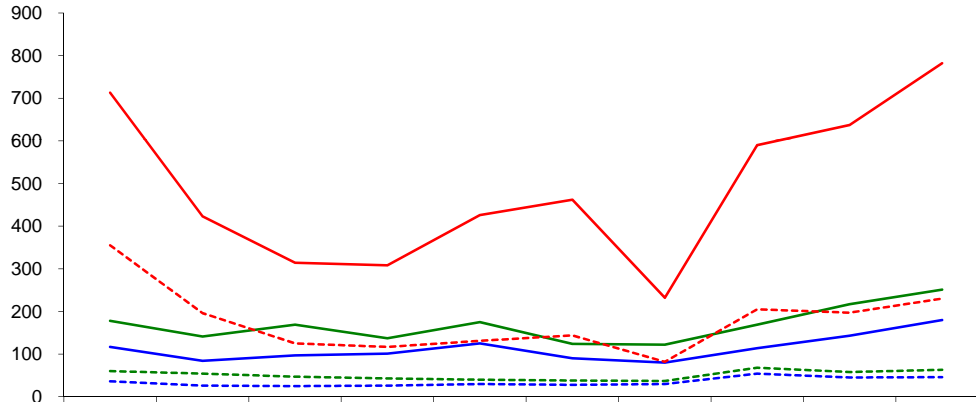
School of Allied Health Sciences All Applicants and Students



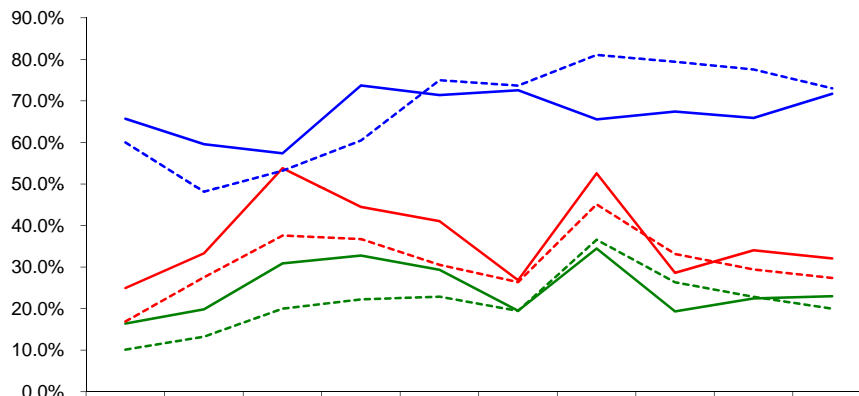


Applied, Admitted, and Enrolled By Academic Year

School of Allied Health Sciences Gender



	1998-99	1999-00	2000-01	2001-02	2002-03	2003-04	2004-05	2005-06	2006-07	2007-08
Applied - Female	713	423	314	308	426	462	232	590	637	782
Admitted - Female	178	141	169	137	175	124	122	169	217	251
Enrolled - Female	117	84	97	101	125	90	80	114	143	180
Applied - Male	355	196	125	117	131	144	82	205	197	230
Admitted - Male	60	54	47	43	40	38	37	68	58	63
Enrolled - Male	36	26	25	26	30	28	30	54	45	46



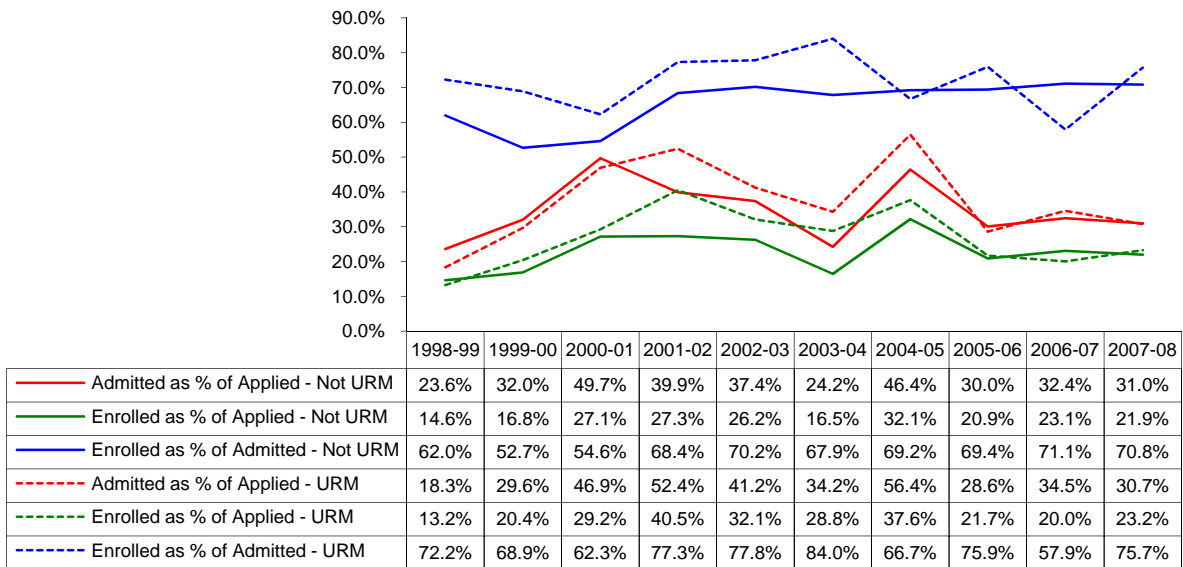
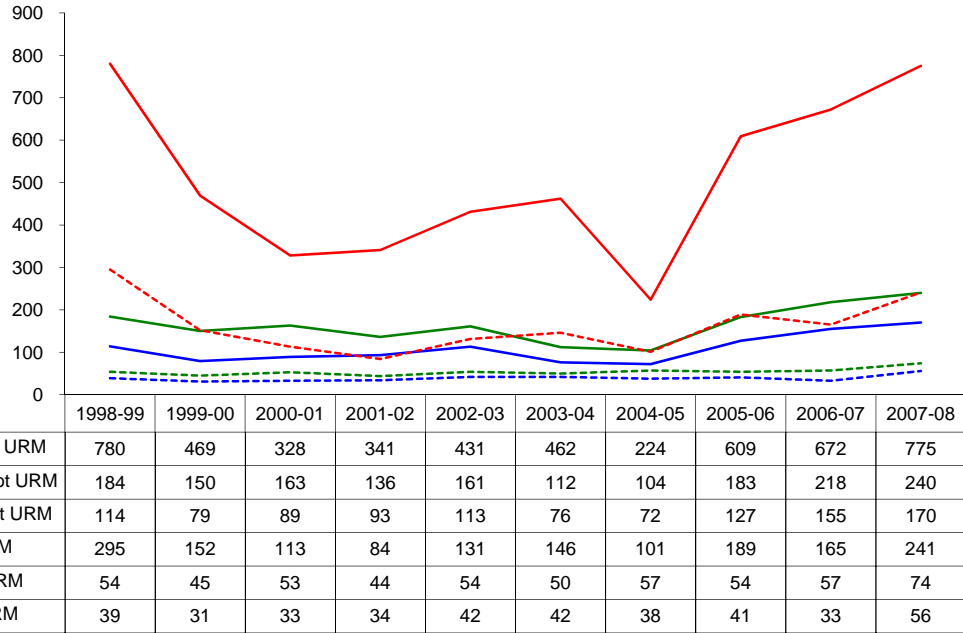
	1998-99	1999-00	2000-01	2001-02	2002-03	2003-04	2004-05	2005-06	2006-07	2007-08
Admitted as % of Applied - Female	25.0%	33.3%	53.8%	44.5%	41.1%	26.8%	52.6%	28.6%	34.1%	32.1%
Enrolled as % of Applied - Female	16.4%	19.9%	30.9%	32.8%	29.3%	19.5%	34.5%	19.3%	22.4%	23.0%
Enrolled as % of Admitted - Female	65.7%	59.6%	57.4%	73.7%	71.4%	72.6%	65.6%	67.5%	65.9%	71.7%
Admitted as % of Applied - Male	16.9%	27.6%	37.6%	36.8%	30.5%	26.4%	45.1%	33.2%	29.4%	27.4%
Enrolled as % of Applied - Male	10.1%	13.3%	20.0%	22.2%	22.9%	19.4%	36.6%	26.3%	22.8%	20.0%
Enrolled as % of Admitted - Male	60.0%	48.1%	53.2%	60.5%	75.0%	73.7%	81.1%	79.4%	77.6%	73.0%

Excludes students not reporting gender on the application



Applied, Admitted, and Enrolled By Academic Year

School of Allied Health Sciences Under Represented Minority (URM) Status



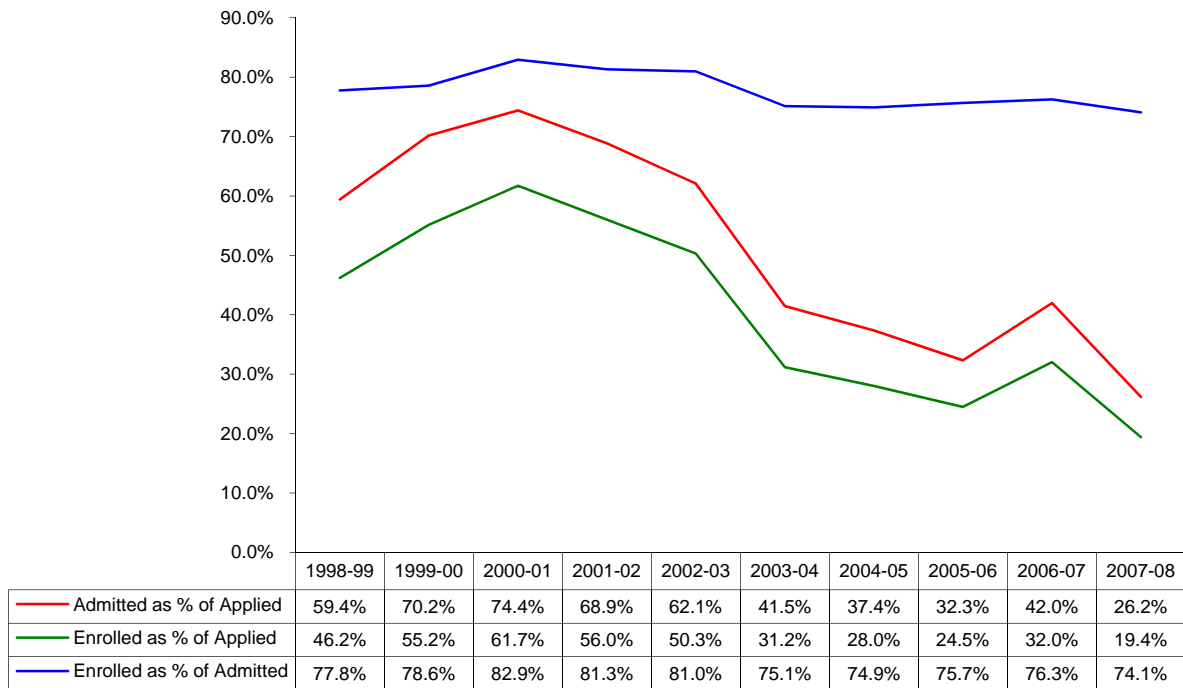
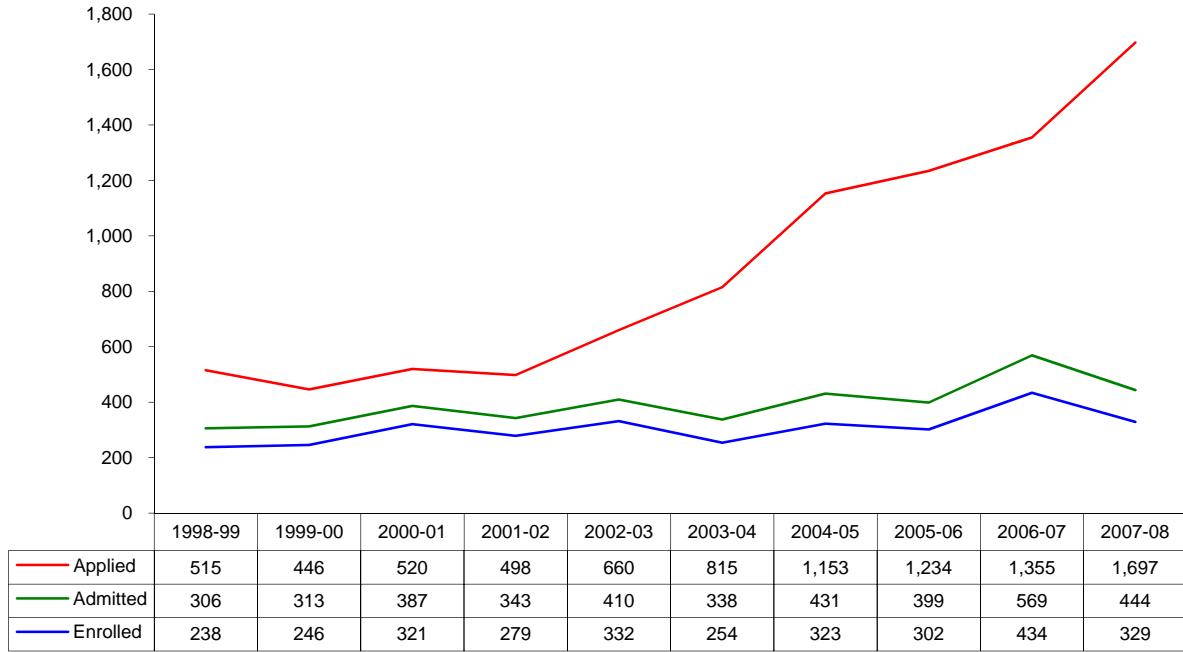
Students not reporting ethnicity on application included in "Not URM"

Under represented minority includes only American Indian / Alaskan Native, Black, and Hispanic



Applied, Admitted, and Enrolled By Academic Year

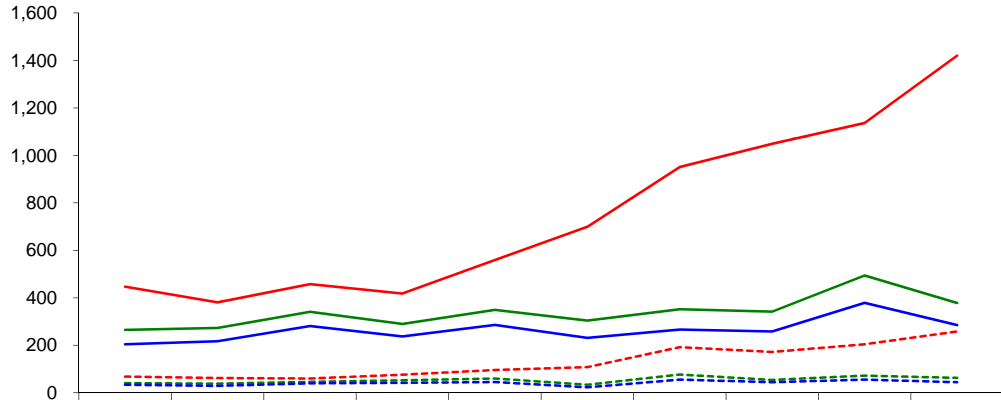
School of Nursing All Applicants and Students



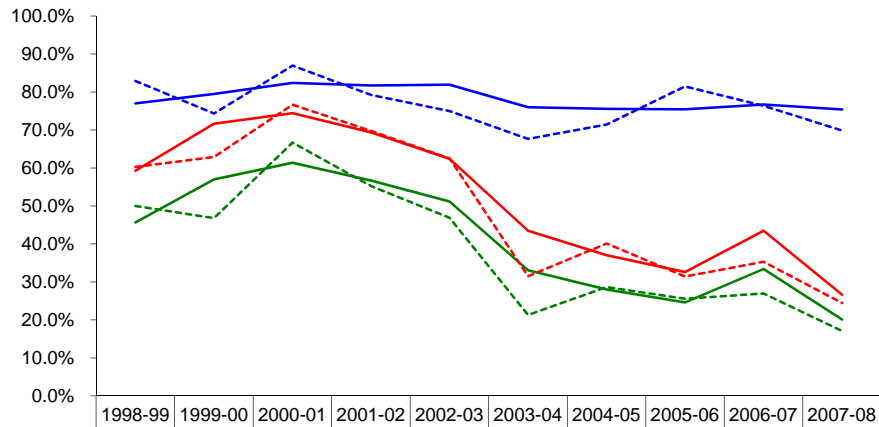


Applied, Admitted, and Enrolled By Academic Year

School of Nursing Gender



	1998-99	1999-00	2000-01	2001-02	2002-03	2003-04	2004-05	2005-06	2006-07	2007-08
Applied - Female	447	381	458	418	559	699	951	1,049	1,136	1,420
Admitted - Female	265	273	341	290	349	304	352	342	494	378
Enrolled - Female	204	217	281	237	286	231	266	258	379	285
Applied - Male	68	62	60	76	96	108	192	172	204	258
Admitted - Male	41	39	46	53	60	34	77	54	72	63
Enrolled - Male	34	29	40	42	45	23	55	44	55	44



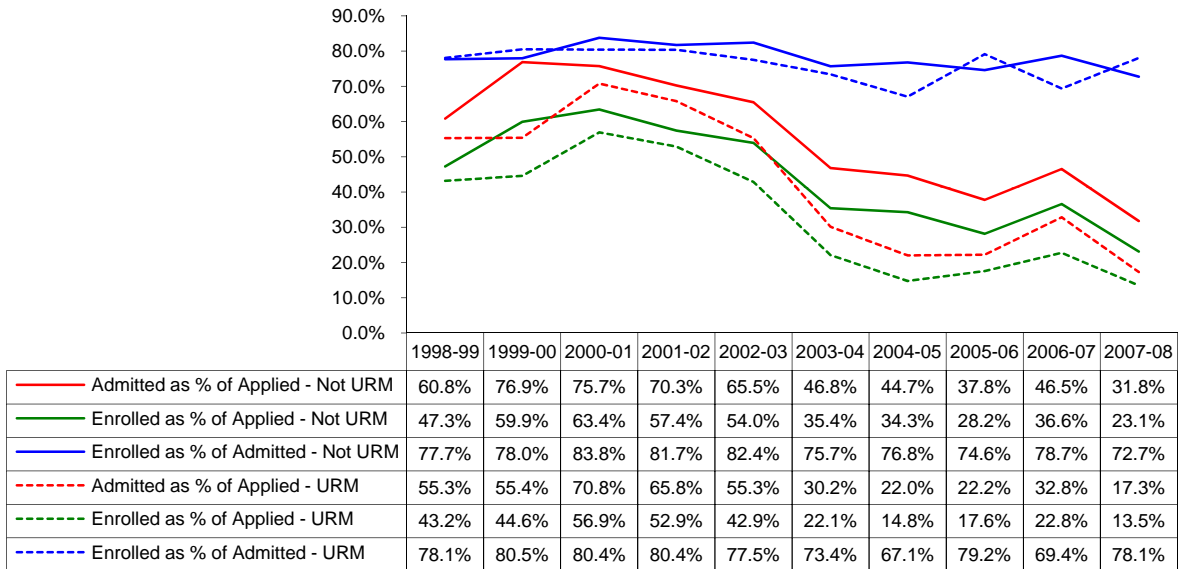
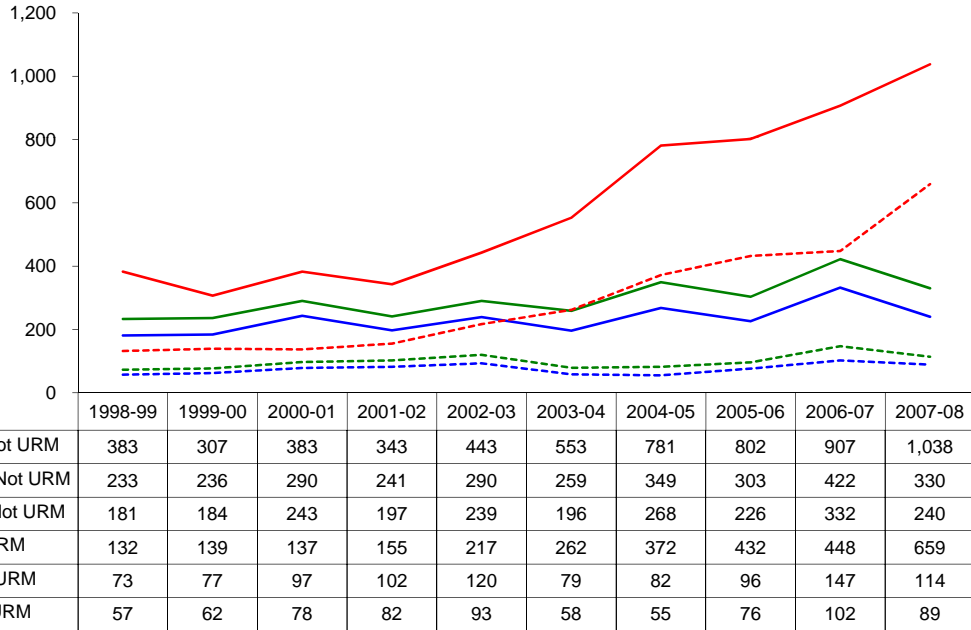
	1998-99	1999-00	2000-01	2001-02	2002-03	2003-04	2004-05	2005-06	2006-07	2007-08
Admitted as % of Applied - Female	59.3%	71.7%	74.5%	69.4%	62.4%	43.5%	37.0%	32.6%	43.5%	26.6%
Enrolled as % of Applied - Female	45.6%	57.0%	61.4%	56.7%	51.2%	33.0%	28.0%	24.6%	33.4%	20.1%
Enrolled as % of Admitted - Female	77.0%	79.5%	82.4%	81.7%	81.9%	76.0%	75.6%	75.4%	76.7%	75.4%
Admitted as % of Applied - Male	60.3%	62.9%	76.7%	69.7%	62.5%	31.5%	40.1%	31.4%	35.3%	24.4%
Enrolled as % of Applied - Male	50.0%	46.8%	66.7%	55.3%	46.9%	21.3%	28.6%	25.6%	27.0%	17.1%
Enrolled as % of Admitted - Male	82.9%	74.4%	87.0%	79.2%	75.0%	67.6%	71.4%	81.5%	76.4%	69.8%

Excludes students not reporting gender on the application



Applied, Admitted, and Enrolled By Academic Year

**School of Nursing
Under Represented Minority (URM) Status**



Students not reporting ethnicity on application included in "Not URM"

Under represented minority includes only American Indian / Alaskan Native, Black, and Hispanic