

MESSAGE FROM YOUR EMERGENCY PREPAREDNESS OFFICER

Dear members of the campus community,

Those of us who work and/or live along the coast often treasure the wonderful sights, sounds, scents and lifestyle this shore-side existence offers. But every year, as hurricane season arrives, we come to grips with a tropical weather threat that warrants serious attention and preparation.



Dr. Joan Richardson

As we ready for this season—and for any sort of emergency that can present itself—I encourage you to do the following:

If you don't already have one, develop a personal or family emergency plan, one that addresses what you will do and where you will go if faced with a threat.

Get familiar with your departmental emergency plan. Every area is required to have one and to update it each year.

Get familiar with our institutional plan, which has been recently updated and is online at http://www.utmb.edu/emergency_plan/

Know whether you are designated with "essential" or "non-essential" emergency status; understand what your designation means

and what your role is in a crisis.

Essential personnel can be called upon in stressful and challenging times to do difficult things; I expect them to be and remain fit for duty at all times in a crisis.

Stay alert and stay informed of possible weather threats.

All employees should wear their university identification whenever on campus; in a crisis, the orange "essential" badge cards and parking permits will be required for those remaining on campus.

Most important to me is preserving your health and safety. Please do not put your life at risk in dangerous conditions to report to work or school. Call, communicate, let us know what is happening and we will make every effort to cover all the needs with the available resources.

Once again, I find myself repeating our seasonal mantra: We'll prepare for the worst, hope for the best, and make do with what we get. Thank you for your support and dedicated service to the university and those we serve.

Dr. Joan Richardson
Institutional Emergency Preparedness Officer

Clip and save

Clip this handy resource and have all the numbers and information you need together.

UTMB ALERT LINE
(409) 77-ALERT (772-5378)
(888) 772-5449 (toll-free)

UTMB HOME PAGE AND ALERT WEB SITE
www.utmb.edu
www.utmb.edu/alert

BACKUP FOR INSTITUTIONAL AND ENTITY INFORMATION
www.utmbinfo.com

MY SUPERVISOR'S CONTACT INFORMATION:

Remember, always keep in touch with your supervisor, monitor radio and television news for updates, check the online resources for information and always use your best judgement for your safety.

When it comes to getting prepared and gathering good information about weather and other emergencies, the following web sites are good resources:

Galveston County Office of Emergency Management
www.gcoem.org/

NOAA Tropical Prediction Center
www.nhc.noaa.gov

Hurricane Headquarters: South Florida Sun-Sentinel
www.sun-sentinel.com/news/weather/hurricane/

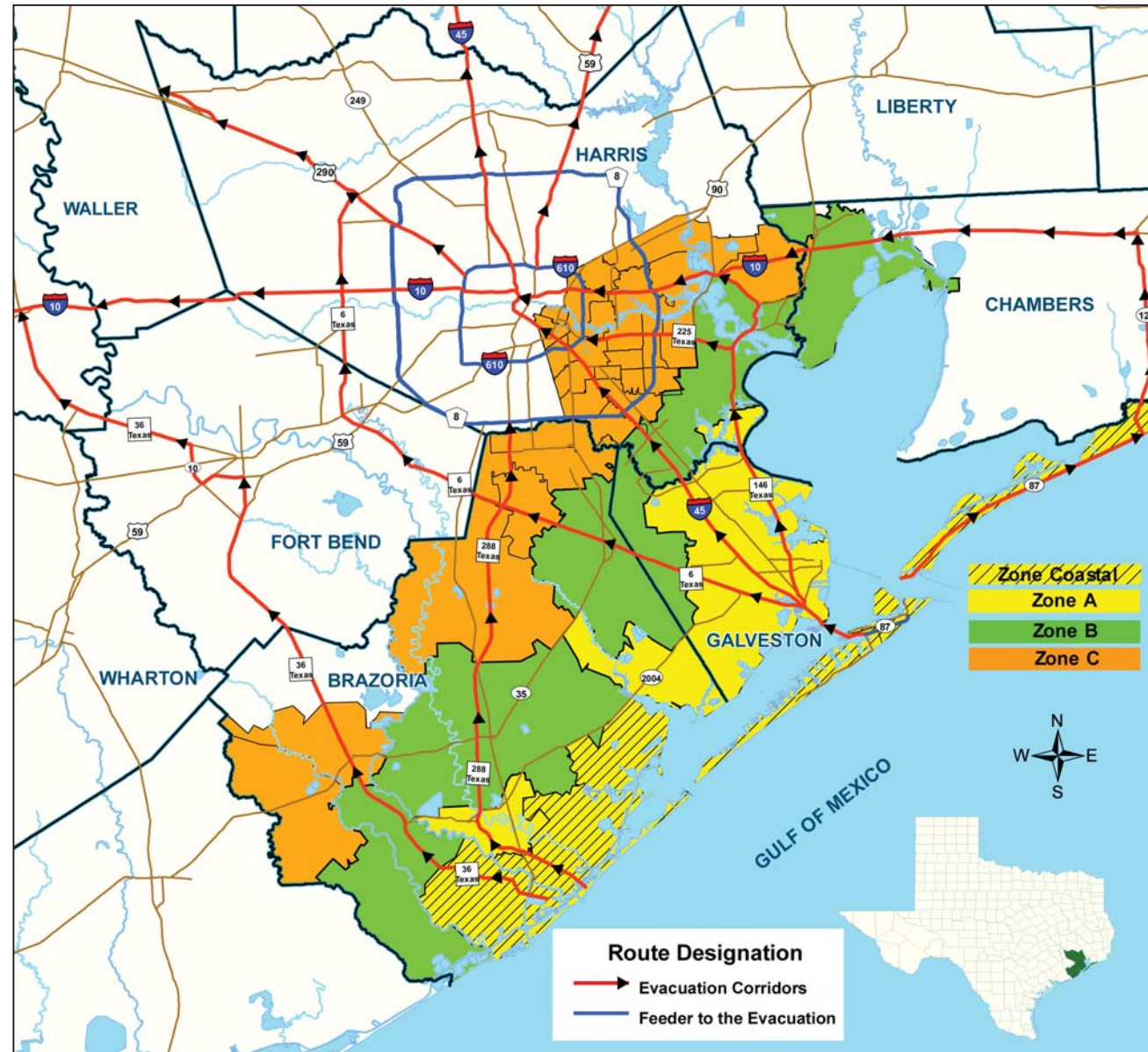
American Red Cross
www.redcross.org/services/disaster/0,1082,0_587_00.html

Tropical Weather: Weather Underground
www.wunderground.com/tropical/

Weather Channel
www.weather.com/hurricanecentral/

BRAZORIA/GALVESTON/HARRIS COUNTY HURRICANE EVACUATION ZONES

In an effort to ensure a more orderly evacuation of the Galveston-Houston area when a major hurricane approaches, Galveston, Brazoria and Harris counties along with the City of Houston have adopted a "zip code evacuation plan" for the 2007 Hurricane Season. The intent of the zip code zone plan is to ease traffic congestion and assist residents of low-lying portions of Galveston, Brazoria and Harris counties to evacuate before those outside the risk areas enter the roadways. See the map below for which area you live in. For additional details as well as a ZIP code list by zone, visit the Galveston County Office of Emergency Management's website at <http://www.gcoem.org> to download the new zip code evacuation map.



COMMUNICATION DURING AN EMERGENCY

UTMB recognizes that maintaining communication during an emergency is critical to the best possible outcome. Below are some highlights relevant for this year:

- A satellite-based service will provide dedicated voice and data connections in an emergency. The externally-mounted satellite dishes were ordered with replacement parts that can be quickly re-installed after a storm. The system was tested successfully in May.
- A new decentralized, off-campus web site was launched last season for institutional and entity emergency communication: www.utmbinfo.com. The site will serve as a backup if existing sites become unavailable, and provides a good way for entities to provide area-specific information.
- A off-site backup to UTMB's email system should be available this season. While not as full-featured as UTMB's regular email, the backup system will be available via the web and maintain the ability to send and receive messages using one's regular UTMB email address.
- A new "reverse 911" system will allow any member of the university community to elect to have text- or voice-based emergency information sent to their device or venue of choice—a text message, page, email to an alternate address, etc. Watch for details in the coming weeks.
- Extensive institutional planning and testing around emergency power, data backups, handheld radios, orange emergency phones, wireless and cable network access, protocols and much more continues at UTMB.
- Once again, UTMB will work closely with state, county and city emergency management officials to follow their guidance, work in concert and act responsibly for the safety of our students, patients and employees.
- Get more information about UTMB emergency preparedness online at www.utmb.edu/emergency_plan
- To get details on many of these activities, you can watch the video presentations from the 2007 All-Staff Emergency Preparedness Meeting online at www.utmb.edu/emergency_plan/2007Prep.asp