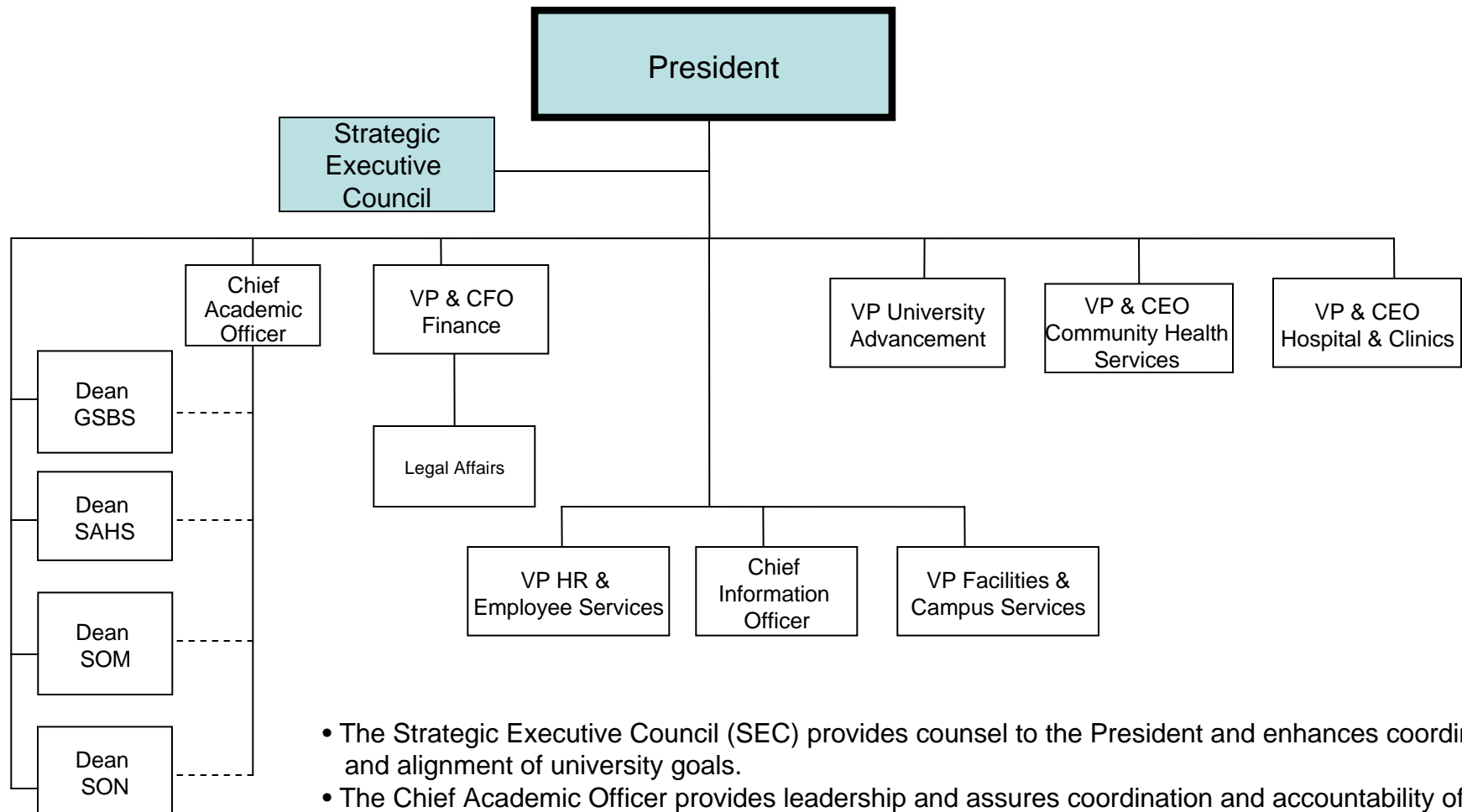


University of Texas Medical Branch Executive Administration Organizational Chart



- The Strategic Executive Council (SEC) provides counsel to the President and enhances coordination and alignment of university goals.
- The Chief Academic Officer provides leadership and assures coordination and accountability of the Council of Deans and all academic policies, functions, and support services including Office of Institutional Effectiveness, Academic Resources, and Student Services.
- Human Resources and Employee Services has oversight of affirmative action, ADA, and grievances.
- Facilities and Campus Services oversees campus security and environmental health & safety.